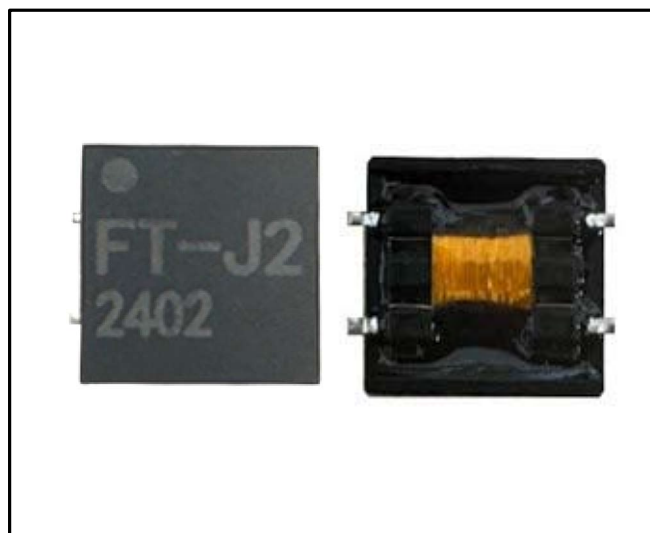
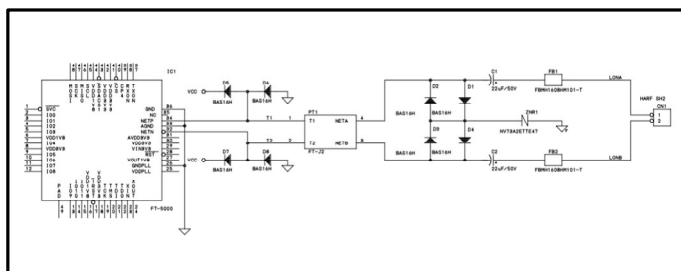


# FT-J2 Free Topology Transceiver



## Connection circuit diagram

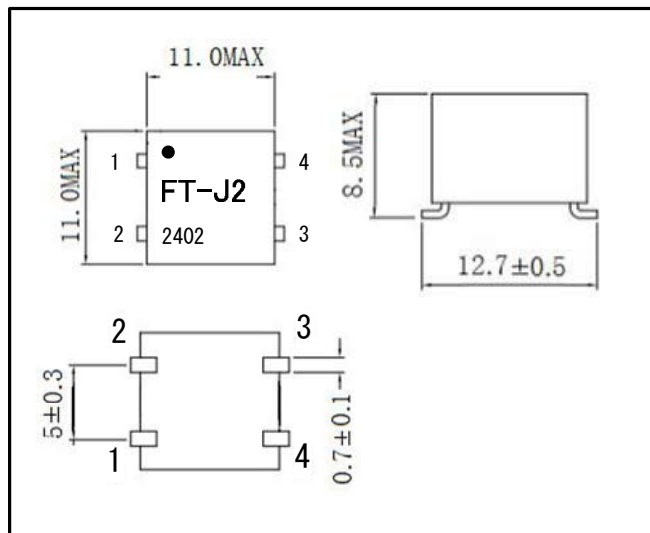


Window clamp circuit (D5, D6, D7, D8)はT1, T2端子に接続

## Description

FT-J2 フリー トポロジ トランシーバーは、ANSI/CEA-709.3+R2015に準拠したトランシーバーです。ANSI/CEA-709.1-B (EN14908.1) プロトコル スタックを FT-J2 トランシーバーと組み合わせ、FT-10 フリー トポロジ ネットワークに接続する事が可能なパルストランスです。FT-J2は、FT-709MW, EIA709MW, FT-5000に接続可能なパルストランスです。

## FT-J2 Communication Transformer SMT Package Diagram



## FT-J2 Transformer Pin Descriptions

Pin Number	Pin Name	Pin Function
1	T1	Internally connects to pin
2	T2	Internally connects to pin
3	NETB	Network Port, polarity Insensitive
4	NETA	Network Port, polarity Insensitive

## General Specifications

### Data Communications Type

Differential Manchester coding

### Network Polarity

Polarity insensitive

### Isolation Between Network and

0-60Hz, 60 seconds 1000Vrms

0-60Hz, continuous 277Vrms

### EMI

Designed to comply with FCC Part 15 Level B and EN55022 Level B

### ESD

Designed to comply with EN 61000-4-2, Level 4

### Radiated Electromagnetic Susceptibility

Designed to comply with EN 61000-4-3, Level 3

### Fast Transient/Burst Immunity

Designed to comply with EN 61000-4-4, Level 4

### Surge Immunity

Designed to comply with EN 61000-4-5, Level 3

### Conducted RF Immunity

Designed to comply with EN 61000-4-6, Level 3

### Transmission Speed

78 kilobits per second

### Number of Transceivers Per Segment

Up to 64

### Network Wiring

24 to 16AWG twisted pair

### Network Length in Free Topology

1000m (3,280 feet) maximum total wire with one repeater

500m (1,640 feet) maximum total wire with no repeater

500m (1,640 feet) maximum device-to-device distance

### Network Length in Doubly Terminated Bus Topology

5400m (17,710 feet) with one repeater

2700m (8,850 feet) with no repeaters

### Network Termination

One terminator free topology; two terminators required

### Operating Temperature

-40 to 85°C

### Operating Humidity

25-90% RH @50° C, non-condensing

### Peak Reflow Soldering Temperature

260°C